



- HOME
- VOLUNTEER ACTIVITIES
- SPONSORS
- JOIN - DONATE
- LATEST NEWS & EVENTS
- CONTACT INFORMATION
- ABOUT US
- ENVIRONMENTAL ISSUES
- NEW ZEALAND ECOLOGY

SEARCH

Help rare and odd flightless birds

Donate to Terra Nature Fund for Bank of New Zealand Kiwi Recovery Trust breeding programs for endangered [Kiwi](#).....

..... and Threatened Species Trust critically endangered [Kakapo](#) and [Takahe](#) programs.



Ads by Google

[New Zealand Driving Tours](#)

Experience best of NZ - your ideal NZ tour planned for you - See More

[www.FineToursNewZe...](#)



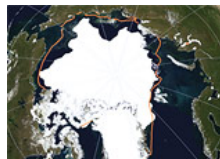
.....working to conserve and protect
New Zealand's unique biodiversity

Podocarp-broadleaf native forest, King Country Graeme Woodhouse 2009

What makes the 'edge ecology' internationally important

New Zealand was one of the last places on Earth colonized by humans, with one of the worst biological losses. Unique ecological events occurred during the archipelago's 80 million year isolation from the rest of the world, after the Zealandia continent broke away from the Gondwana super-continent.

As mammals developed in most places, New Zealand's exceptionally odd ecology evolved with three bats as the only land mammals. With the world's most extensive collection of flightless birds, 80 percent endemism in plants, gigantism in insects, and prehistoric living fossils preceding dinosaurs, the country is a biological treasure chest.



Arctic sea ice falls to third-lowest extent, downward trend continues

In September 2010 the extent of Arctic summer sea ice fell below 2009. [► More](#)



Deadly kauri tree disease found close to Tane Mahuta

The fungus *Phytophthora* taxon *Agathis* has infected a kauri 500m from the largest kauri. [► More](#)



Greenland ice sheet larger contributor to sea level rise

Ice is melting faster than expected, and may be responsible for 25% of global sea rise [► More](#)



Kakapo population breaks 100

The long campaign to save critically endangered kakapo has reached a milestone with 103 birds. [► More](#)



Explorers marvel at thriving brittlestar colony on a Macquarie Ridge seamount

A rare brittlestar colony has been found on a subantarctic seamount. [► More](#)



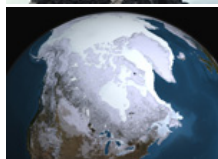
Extinction crisis continues apace

The endemic freshwater brown mudfish *Neochanna apoda*, moves up to 'vulnerable' in the IUCN Red List. [► More](#)



Three more native birds listed as critically endangered

Grey duck, grey-headed mollymawk, and eastern rockhopper penguin now 'nationally critical'. [► More](#)



Arctic is literally on thin ice

After less winter cover, Arctic sea ice has begun its seasonal decline, with a lot of thin first-year ice [► More](#)



Permafrost threatened by rapid retreat of Arctic sea ice

Arctic warming could triple with rapid sea ice loss, raising concerns about permafrost thawing [► More](#)



Earth impacts linked to human-caused climate change

Natural systems are impacted as Siberian lakes disappear over 25 years and permafrost thaws [► More](#)

"New Zealand has the world's most important island biota ..."

according to biologist Professor Jared Diamond at UCLA, who also claims "... the biotas of New Zealand and Madagascar are the closest we shall ever come to observing the products of continental evolution in island-like isolation ..."

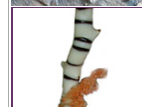
SEE THE ARTICLE "New Zealand as an archipelago: An international perspective"



Tasman Glacier retreat is extreme



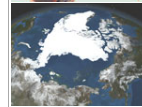
Antarctic ice shelf disintegration



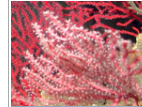
No environmental consideration of bottom trawling in orange roughy allowable catch decision



Orange roughy commercial catch reduced to an all time low



Melting Arctic summer sea ice reaches lowest level



Agreement to restrict South Pacific high seas bottom trawling - is it enough?



The incredible journey of sooty shearwater from New Zealand to the north Pacific...



UN stark predictions of impact of climate change



Copyright © 2003-2010 TerraNature Trust. All rights reserved.

home | sponsors | latest news & events | join - donate | contact information | projects
volunteer activities | about us | site map | environmental issues | New Zealand ecology

